

# PV Pro G83 High Efficiency Inverter



## Features

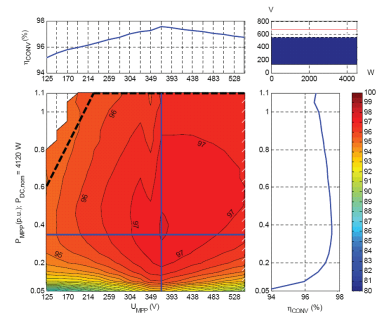
### A Grade Efficiency

- Low Starting Voltage
- 96.5% European Efficiency
- Light weight for simple installation
- Wide range of compatibility - Free matching software
- IP65 rated G83 accredited
- 5 year full replacement Warranty

## Feature

### Low Starting Voltage

Extremely important to the performance of any PV installation is the efficiency of the inverter. Efficiency is not only how well the inverter converts the DC electricity into useful AC, but for how long every day it is working. Ever Solar inverters have an exceptionally low starting voltage which means they start earlier in the day, and finish later at night than most inverters on the market. The operating voltage is 125-450v (on GB Range), and 125-580v on the larger TL range.



## Feature

### 96.5% EU Efficiency

As soon as the Ever Solar inverter is working, it is producing a minimum of 94% efficiency which can go up to 98% efficiency. Compared to the current leading U.K. brands which operate at 92%, they are always performing at A Grade Efficiency. Due to an exceptional 99.5% MPPT adaption Efficiency – this is the frequency per second with which the DC is matched to the AC – the performance of the inverters is consistently high.

## Feature

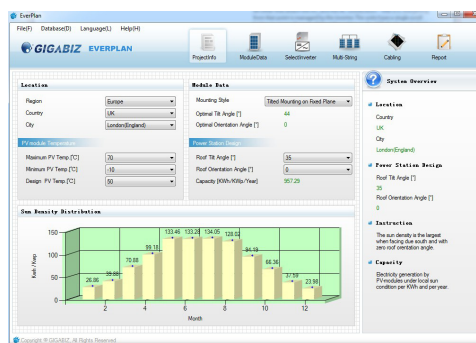
### Light Weight For Simple Installation

The smaller GB range weighs just 14kg, and the TL range is 25kg. This is almost half the weight of many transformer integrated inverters. The design of the Ever Solar range is advanced to the point where there is nothing left to do other than attach the DC, and the AC connections – that is it. Everything from that point is managed by the inverter. The units have a single scroll button to move through all the information on the LCD display and obtain all the operational information.

## Feature

### Wide Range Compatibility

The Ever Solar range are highly compatible with most panels on the market. Many inverters are quite awkward to match with many brands of PV panels – the Ever Solar range rarely have any difficulties. Operationally they perform on a wide parameter basis, which means quite simply that they will cover a wide range of panel numbers. This is important where upgrading of a system may be required in the future (adding a few more panels) as often the Ever Solar inverters are easily capable of taking additional panels. Free matching software is available for the matching, and confirming of performance of the inverters. The simple to use system calculates all the parameters of any given panels, and confirms the suitability of the matching of panels and inverter through a simple green, amber or red system.



## Feature

### 5 Year full Replacement Warranty

Ever Solar are covered by a full 5 year replacement warranty. Continual support for any trouble shooting is available through Gigabiz Ltd, with a complete replacement warranty for 5 years. Where required and extended warranty from 5 to 10 years is also available.

## Feature

### IP65 rated G83 Accredited

The Ever Solar range consists of:  
 Single Phase – GB1700, GB2000, TL3200, TL4600, TL5400  
 Three Phase – TLC 12Kw, TLC 17Kw  
 All the units are IP65, which means they are suitable for internal or external installations as standard. All the units are certified for under the standard U.K. G83 and G59 requirements.

